



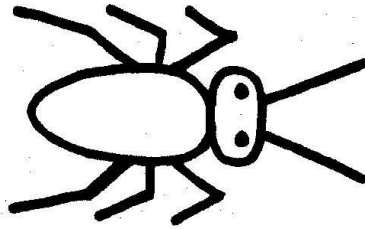
Name: _____ Date: _____

Post-Trip Lesson Plan Game: Beetle

Instructions: Read the rules of the game below then play the game with your classmates. Use the space below to draw your beetle.

Beetle (20th Century United States)

This game requires two dice, paper and pencil. Each player selects a number between one and six and writes it on the top of his piece of paper. Each player in turn then throws the dice once. If he rolls the number previously selected, he may draw a section of the beetle on his paper. If he rolls a double of his selected number, he may draw two sections. Each time he rolls his number, he takes an additional turn. (*First, draw the head, then the body, the eyes, the feelers and then the six legs one at a time*). The player to get his number 12 times will have finished his beetle and is the winner.



7